

## Basement

1,223 SQ FT

### Contacts:

#### OFFICES

 **BLUEBOOK**

**Tom Kemp**  
tom@hk-london.com  
T: +44 (0)20 7100 5555

**Joe Fuller**  
joe@bluebooklondon.co.uk  
T: +44 (0)20 7167 6401

**Stephen Foster**  
stephen@hk-london.com  
T: +44 (0)20 7100 5555

**Chris Watkin**  
chris@bluebooklondon.co.uk  
T: +44 (0)20 7167 6402

**Monique Kelliher**  
monique@hk-london.com  
T: +44 (0)20 7100 5555

**Whitney Bowrin**  
whitney@bluebooklondon.co.uk  
T: +44 (0)20 7167 6405

#### RETAIL

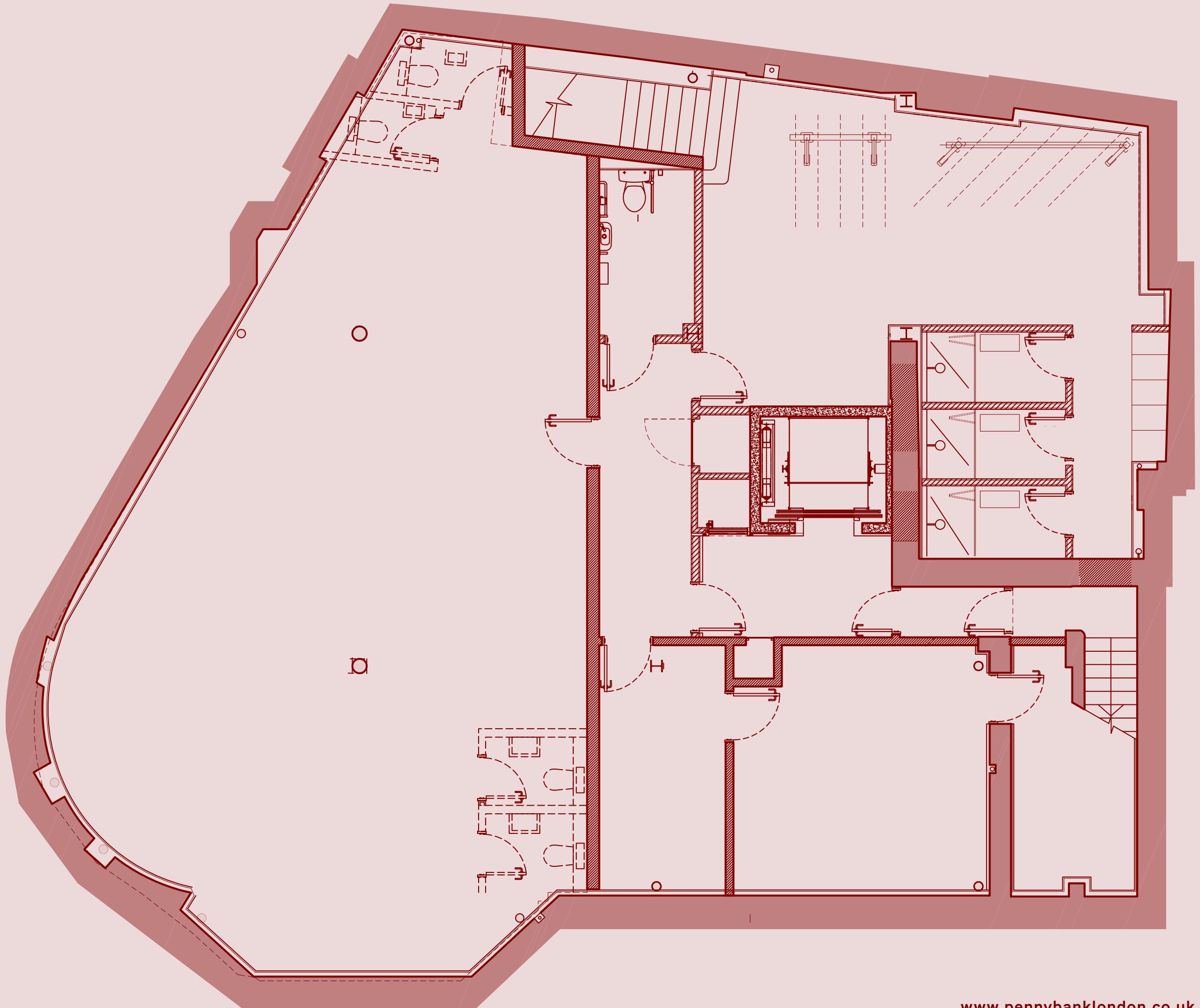


**Anna Fayne**  
afayne@nashbond.co.uk  
T: +44 (0)207 290 4580

**Florence Mills**  
fmills@nashbond.co.uk  
T: +44 (0)207 290 4589



**Jason Smith**  
js@gms-estates.co.uk  
T: (0)20 7269 7691



# Ground floor

2,028 SQ FT

## Contacts:

### OFFICES

 **BLUEBOOK**

**Tom Kemp**  
tom@hk-london.com  
T: +44 (0)20 7100 5555

**Stephen Foster**  
stephen@hk-london.com  
T: +44 (0)20 7100 5555

**Monique Kelliher**  
monique@hk-london.com  
T: +44 (0)20 7100 5555

**Joe Fuller**  
joe@bluebooklondon.co.uk  
T: +44 (0)20 7167 6401

**Chris Watkin**  
chris@bluebooklondon.co.uk  
T: +44 (0)20 7167 6402

**Whitney Bowrin**  
whitney@bluebooklondon.co.uk  
T: +44 (0)20 7167 6405

### RETAIL

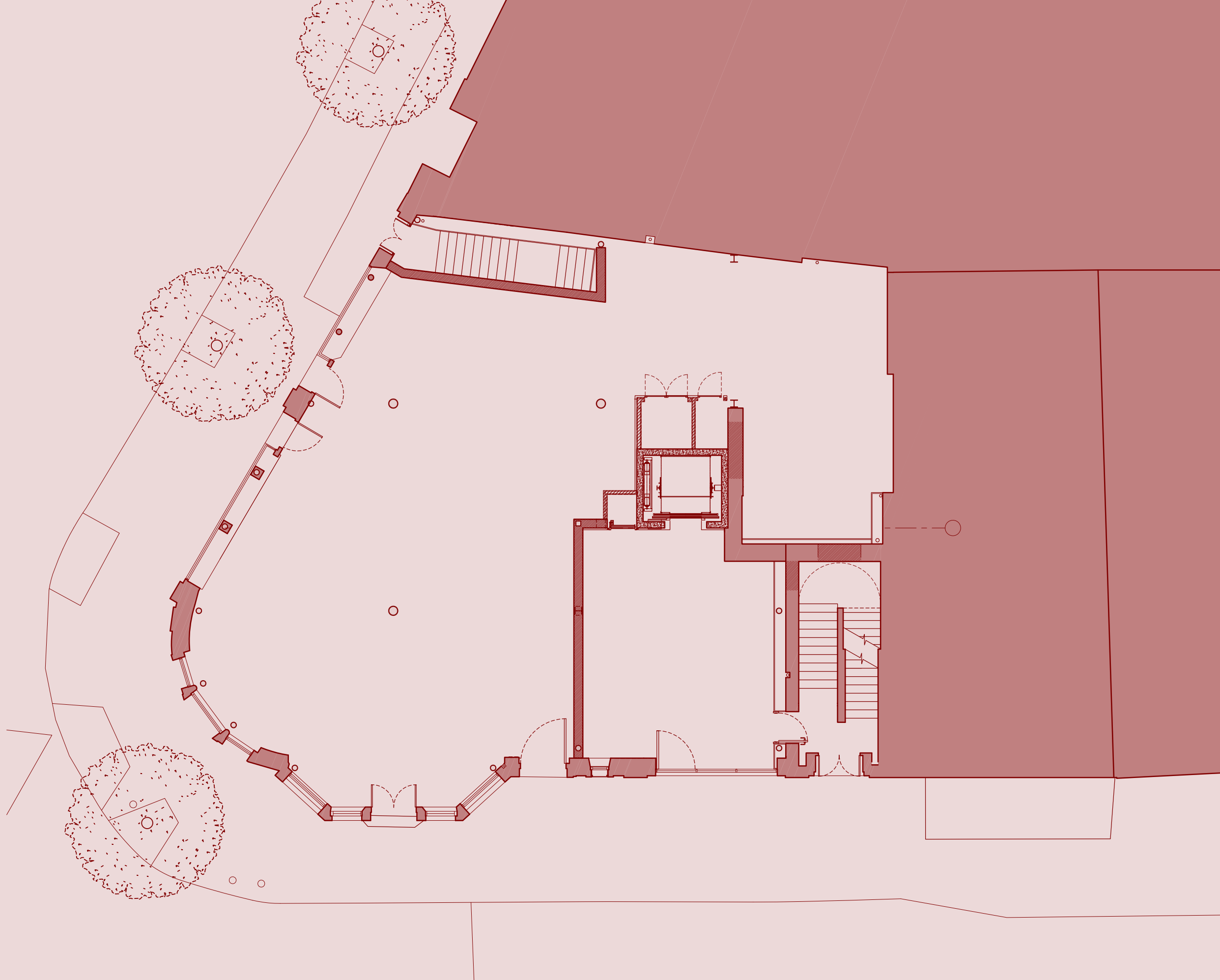


**Anna Fayne**  
afayne@nashbond.co.uk  
T: +44 (0)207 290 4580

**Florence Mills**  
fmills@nashbond.co.uk  
T: +44 (0)0207 290 4589



**Jason Smith**  
js@gms-estates.co.uk  
T: (0)20 7269 7691



# First floor

1,992 SQ FT

## Contacts:

### OFFICES

**HK LONDON** **BLUEBOOK**

**Tom Kemp**  
tom@hk-london.com  
T: +44 (0)20 7100 5555

**Joe Fuller**  
joe@bluebooklondon.co.uk  
T: +44 (0)20 7167 6401

**Stephen Foster**  
stephen@hk-london.com  
T: +44 (0)20 7100 5555

**Chris Watkin**  
chris@bluebooklondon.co.uk  
T: +44 (0)20 7167 6402

**Monique Kelliher**  
monique@hk-london.com  
T: +44 (0)20 7100 5555

**Whitney Bowrin**  
whitney@bluebooklondon.co.uk  
T: +44 (0)20 7167 6405

### RETAIL

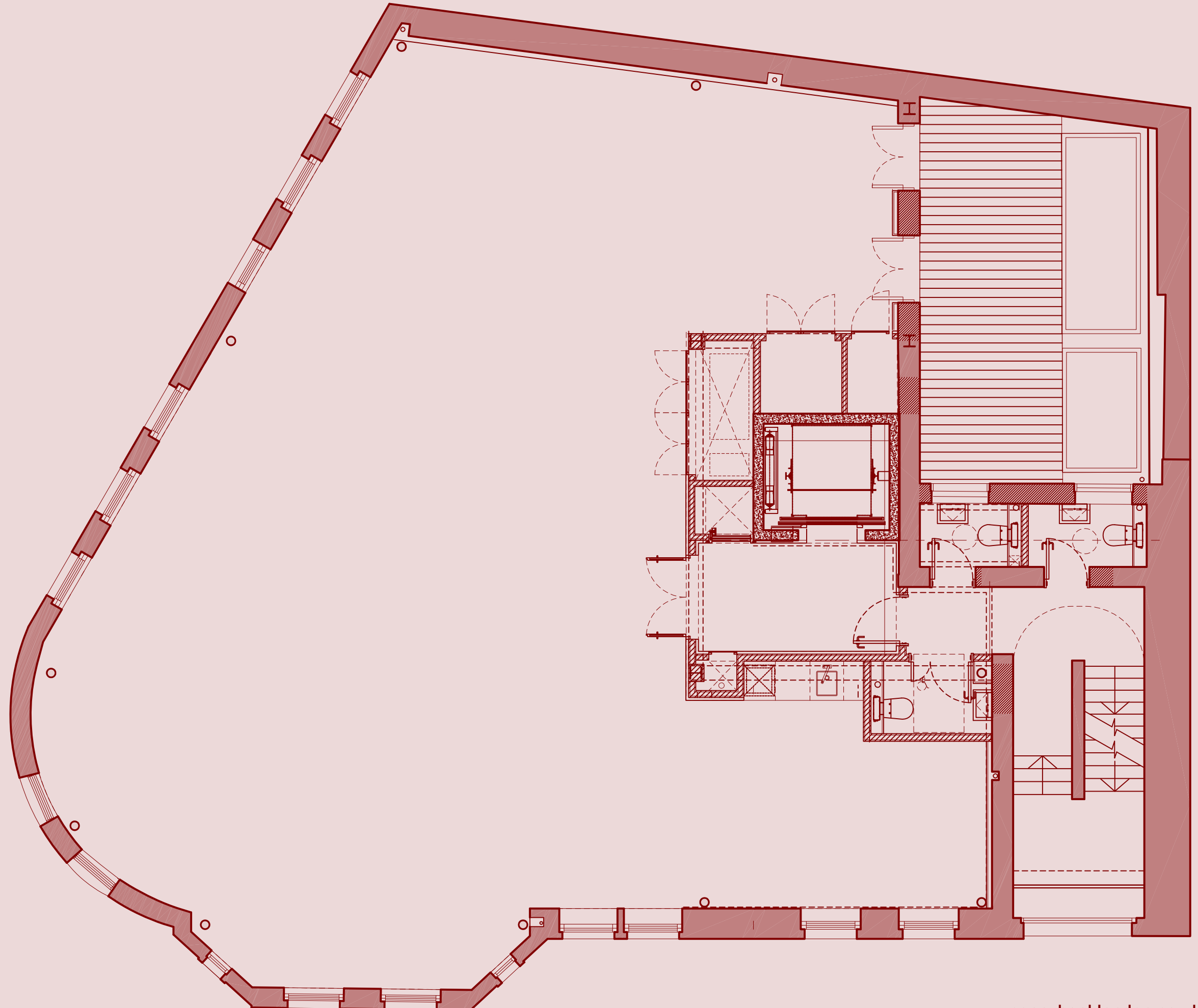
**nashbond**

**Anna Fayne**  
afayne@nashbond.co.uk  
T: +44 (0)207 290 4580

**Florence Mills**  
fmills@nashbond.co.uk  
T: +44 (0)207 290 4589

**gms**

**Jason Smith**  
js@gms-estates.co.uk  
T: (0)20 7269 7691



## Second floor

1,942 SQ FT

### Contacts:

#### OFFICES

 **BLUEBOOK**

**Tom Kemp**  
tom@hk-london.com  
T: +44 (0)20 7100 5555

**Stephen Foster**  
stephen@hk-london.com  
T: +44 (0)20 7100 5555

**Monique Kelliher**  
monique@hk-london.com  
T: +44 (0)20 7100 5555

**Joe Fuller**  
joe@bluebooklondon.co.uk  
T: +44 (0)20 7167 6401

**Chris Watkin**  
chris@bluebooklondon.co.uk  
T: +44 (0)20 7167 6402

**Whitney Bowrin**  
whitney@bluebooklondon.co.uk  
T: +44 (0)20 7167 6405

#### RETAIL

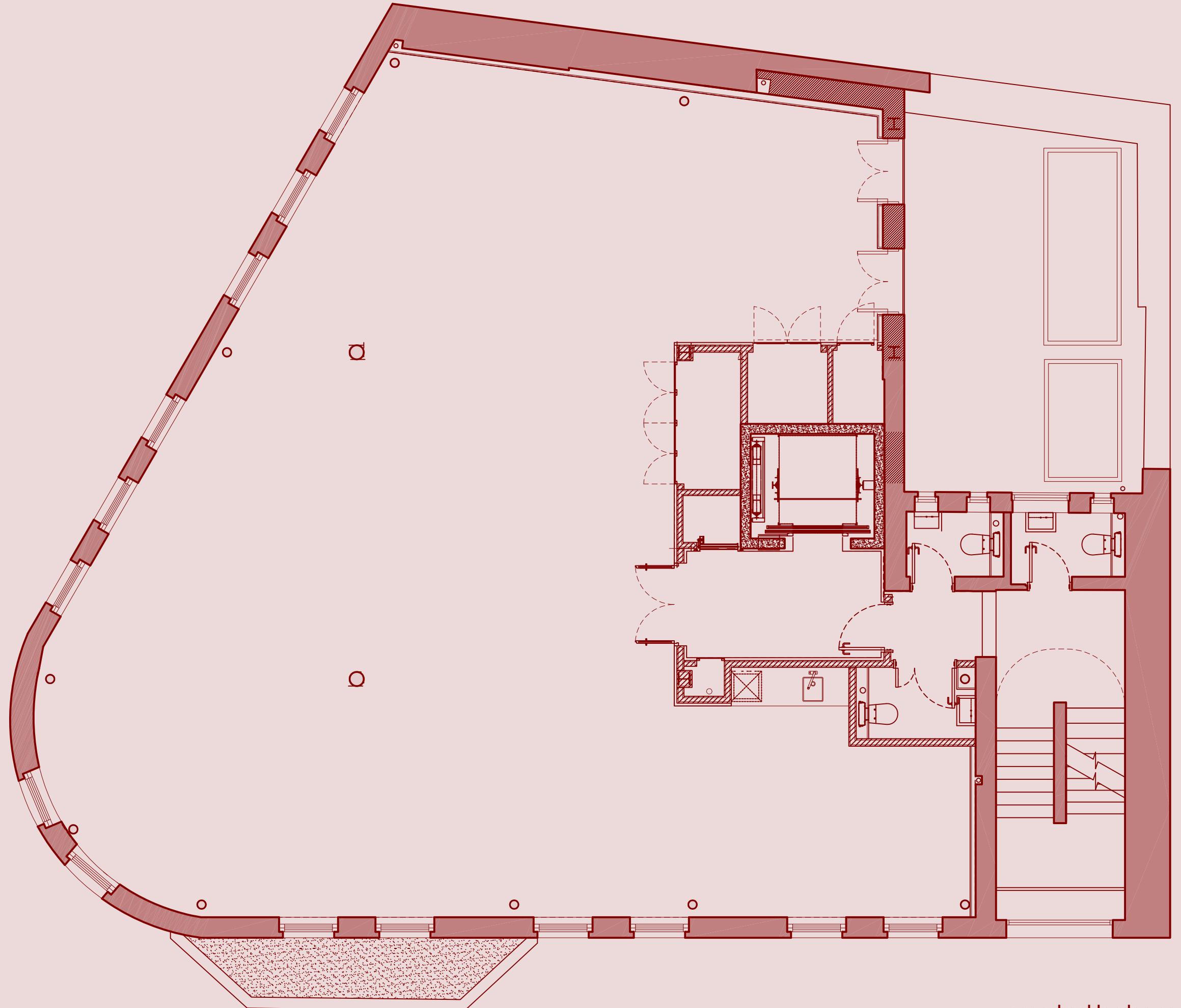


**Anna Fayne**  
afayne@nashbond.co.uk  
T: +44 (0)207 290 4580

**Florence Mills**  
fmills@nashbond.co.uk  
T: +44 (0)207 290 4589



**Jason Smith**  
js@gms-estates.co.uk  
T: (0)20 7269 7691



## Third floor

1,943 SQ FT

### Contacts:

#### OFFICES

 **LONDON**

**Tom Kemp**  
tom@hk-london.com  
T: +44 (0)20 7100 5555

**Stephen Foster**  
stephen@hk-london.com  
T: +44 (0)20 7100 5555

**Monique Kelliher**  
monique@hk-london.com  
T: +44 (0)20 7100 5555

**BLUEBOOK**

**Joe Fuller**  
joe@bluebooklondon.co.uk  
T: +44 (0)20 7167 6401

**Chris Watkin**  
chris@bluebooklondon.co.uk  
T: +44 (0)20 7167 6402

**Whitney Bowrin**  
whitney@bluebooklondon.co.uk  
T: +44 (0)20 7167 6405

#### RETAIL

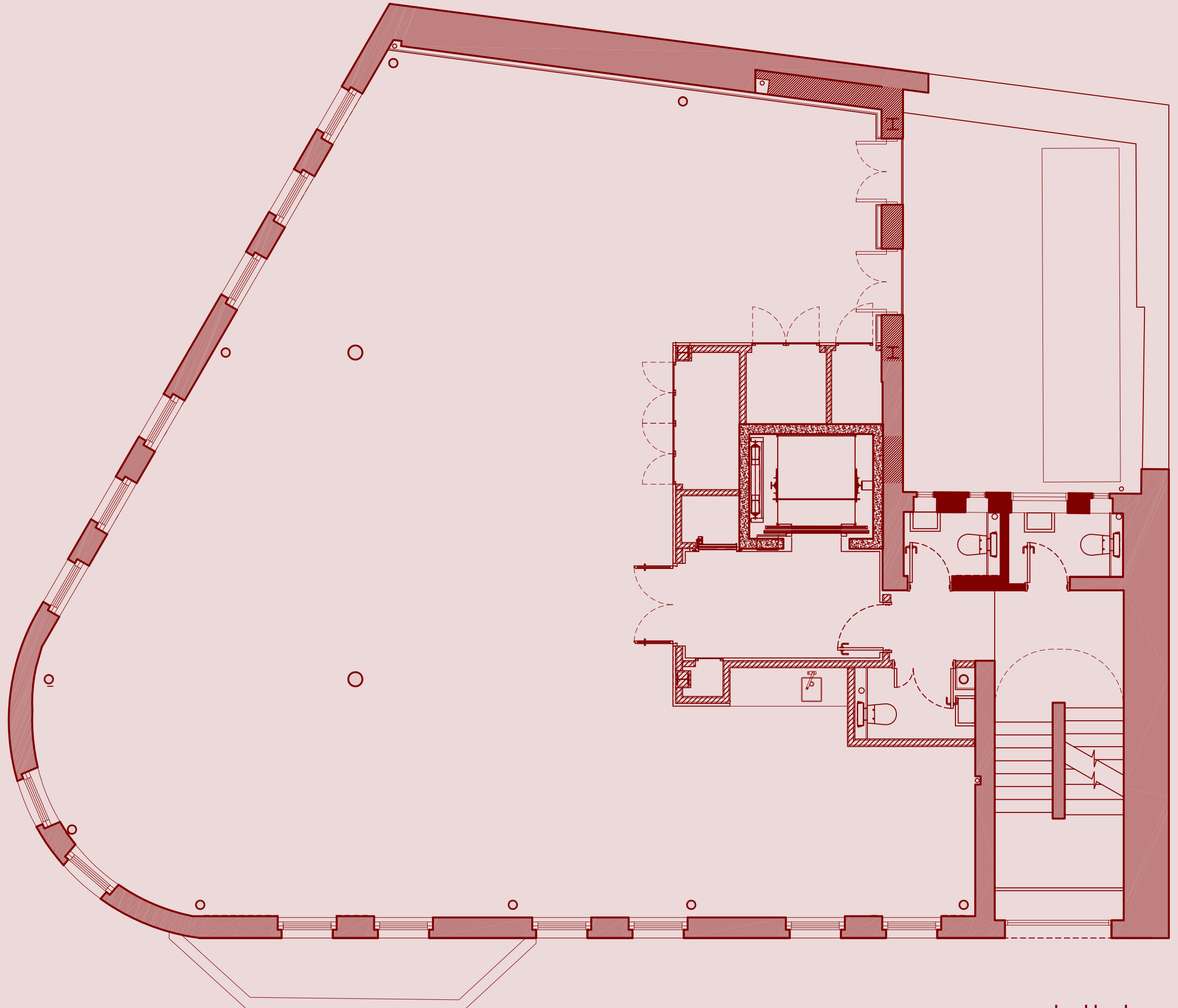
 **nashbond**

**Anna Fayne**  
afayne@nashbond.co.uk  
T: +44 (0)207 290 4580

**Florence Mills**  
fmills@nashbond.co.uk  
T: +44 (0)207 290 4589

 **gms**

**Jason Smith**  
js@gms-estates.co.uk  
T: (0)20 7269 7691



# Fourth floor

1,941 SQ FT

## Contacts:

### OFFICES

**HK LONDON** **BLUEBOOK**

**Tom Kemp**  
tom@hk-london.com  
T: +44 (0)20 7100 5555

**Joe Fuller**  
joe@bluebooklondon.co.uk  
T: +44 (0)20 7167 6401

**Stephen Foster**  
stephen@hk-london.com  
T: +44 (0)20 7100 5555

**Chris Watkin**  
chris@bluebooklondon.co.uk  
T: +44 (0)20 7167 6402

**Monique Kelliher**  
monique@hk-london.com  
T: +44 (0)20 7100 5555

**Whitney Bowrin**  
whitney@bluebooklondon.co.uk  
T: +44 (0)20 7167 6405

### RETAIL

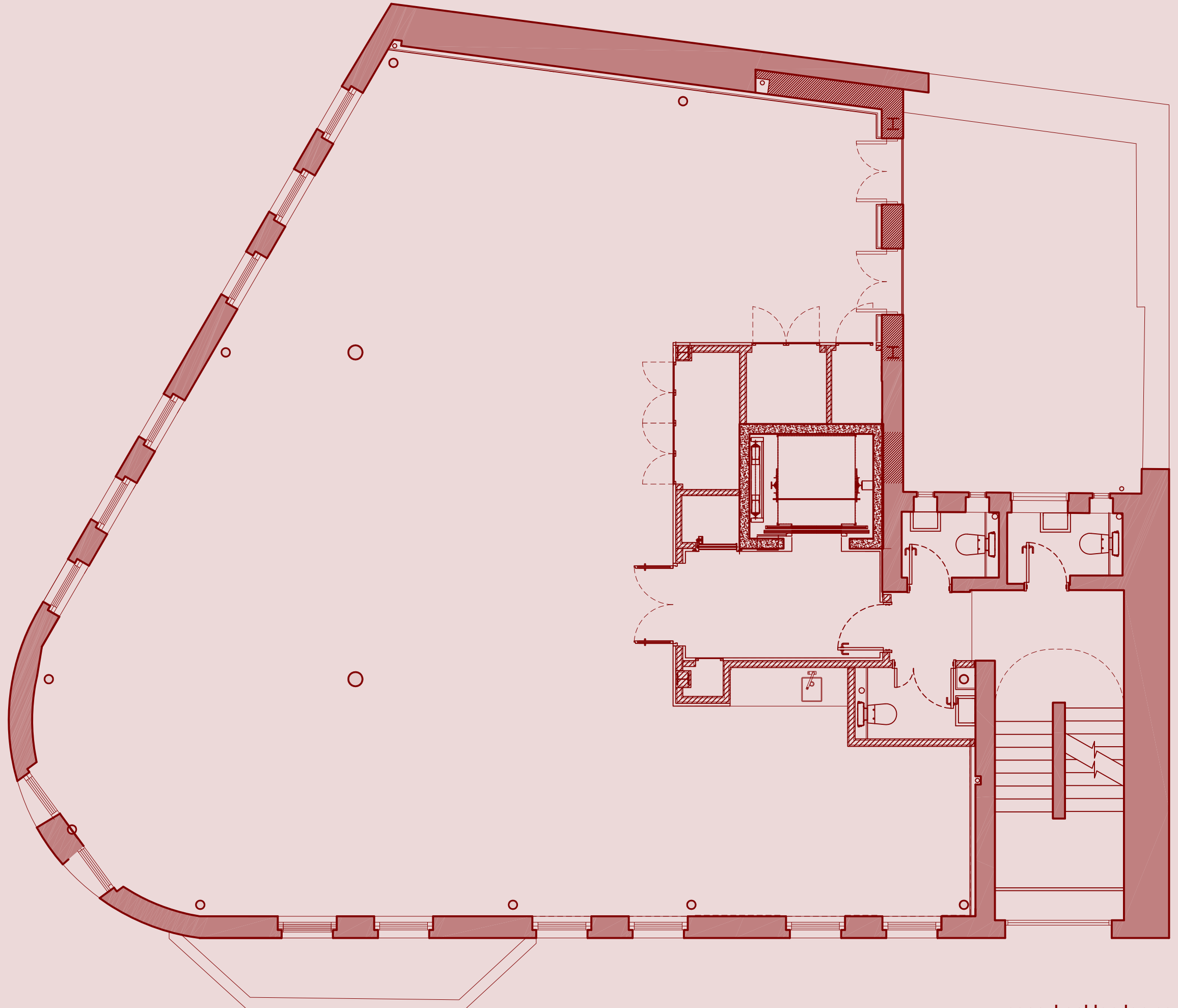
**nashbond**

**Anna Fayne**  
afayne@nashbond.co.uk  
T: +44 (0)207 290 4580

**Florence Mills**  
fmills@nashbond.co.uk  
T: +44 (0)207 290 4589

**gms**

**Jason Smith**  
js@gms-estates.co.uk  
T: (0)20 7269 7691





## Fifth floor

1,946 SQ FT

### Contacts:

#### OFFICES

 **BLUEBOOK**

**Tom Kemp**  
tom@hk-london.com  
T: +44 (0)20 7100 5555

**Stephen Foster**  
stephen@hk-london.com  
T: +44 (0)20 7100 5555

**Monique Kelliher**  
monique@hk-london.com  
T: +44 (0)20 7100 5555

**Joe Fuller**  
joe@bluebooklondon.co.uk  
T: +44 (0)20 7167 6401

**Chris Watkin**  
chris@bluebooklondon.co.uk  
T: +44 (0)20 7167 6402

**Whitney Bowrin**  
whitney@bluebooklondon.co.uk  
T: +44 (0)20 7167 6405

#### RETAIL

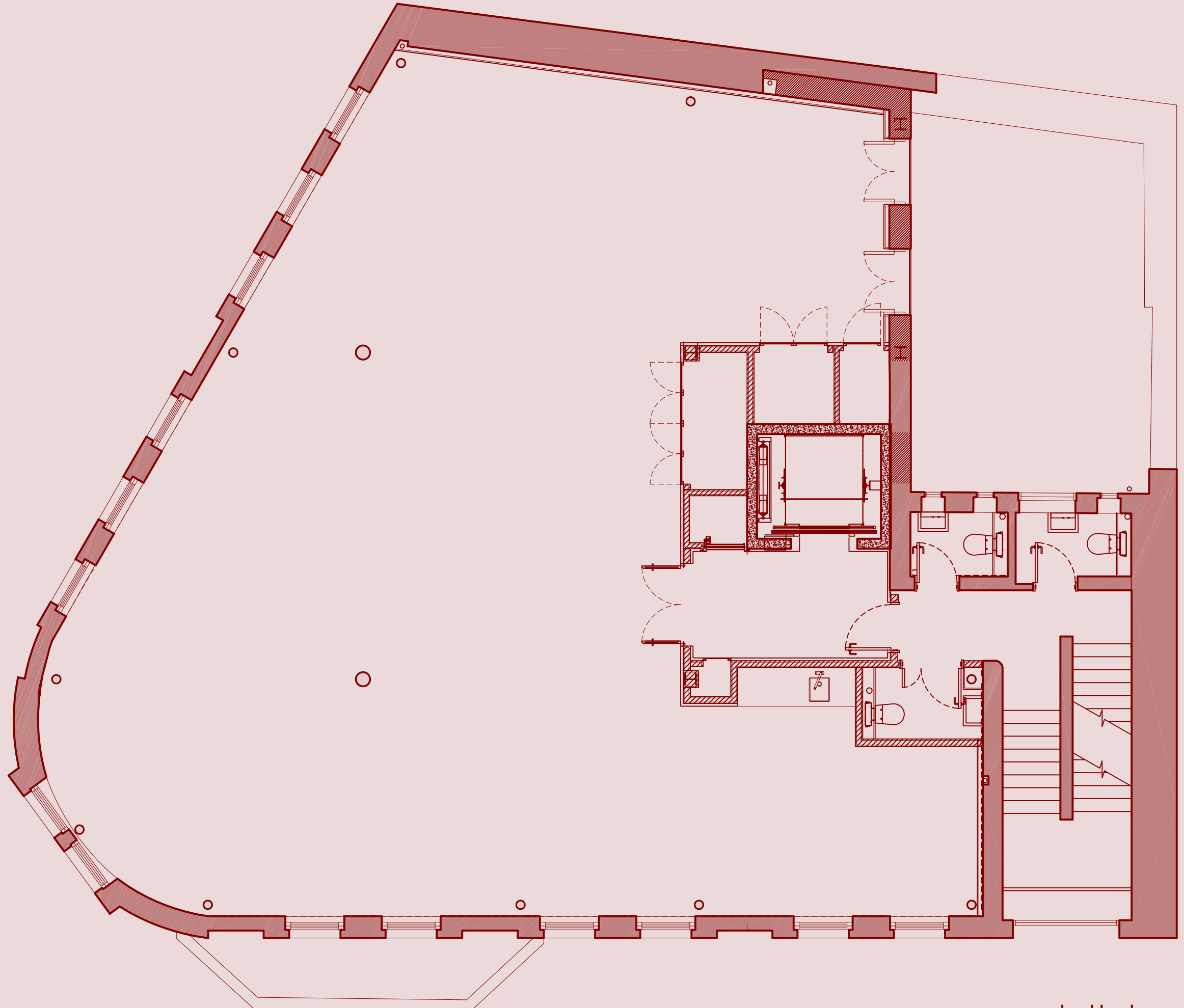


**Anna Fayne**  
afayne@nashbond.co.uk  
T: +44 (0)207 290 4580

**Florence Mills**  
fmills@nashbond.co.uk  
T: +44 (0)0207 290 4589



**Jason Smith**  
js@gms-estates.co.uk  
T: (0)20 7269 7691



## Sixth floor

1,349 SQ FT

### Contacts:

#### OFFICES

 **LONDON**

**Tom Kemp**  
tom@hk-london.com  
T: +44 (0)20 7100 5555

**Stephen Foster**  
stephen@hk-london.com  
T: +44 (0)20 7100 5555

**Monique Kelliher**  
monique@hk-london.com  
T: +44 (0)20 7100 5555

 **BLUEBOOK**

**Joe Fuller**  
joe@bluebooklondon.co.uk  
T: +44 (0)20 7167 6401

**Chris Watkin**  
chris@bluebooklondon.co.uk  
T: +44 (0)20 7167 6402

**Whitney Bowrin**  
whitney@bluebooklondon.co.uk  
T: +44 (0)20 7167 6405

#### RETAIL

 **nashbond**

**Anna Fayne**  
afayne@nashbond.co.uk  
T: +44 (0)207 290 4580

**Florence Mills**  
fmills@nashbond.co.uk  
T: +44 (0)0207 290 4589

 **gms**

**Jason Smith**  
js@gms-estates.co.uk  
T: (0)20 7269 7691

